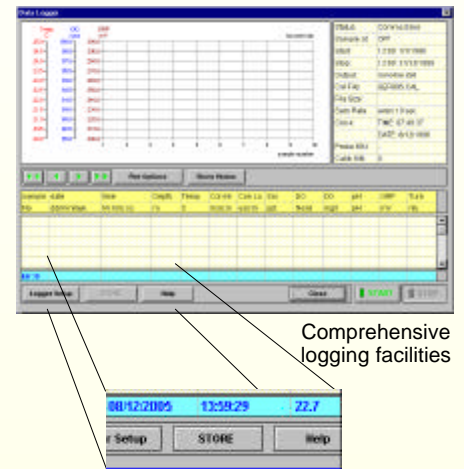
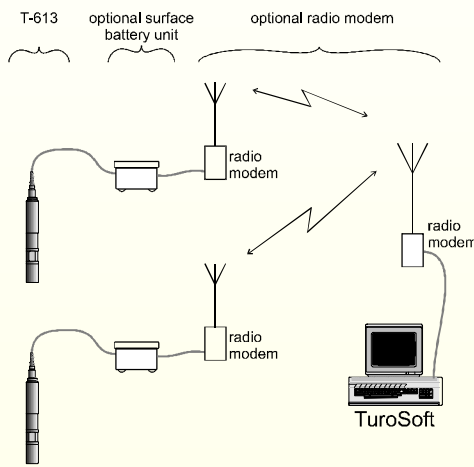


Turo T-613 Water Quality Analyser

MultiprobeTuroSoft Management

- field use with a lap top computer,
- riverside or reservoir field stations,
- aquariums,
- aquaculture,
- on-line process monitoring,
- laboratories,
- small and large boat installations.



Comprehensive logging facilities

STORE button to record spot readings at any time

The T-613 is small, lightweight probe, rich in features. Sensors are accurate and stable. The simple swivel head gives excellent protection for the sensors when in use and clear access for servicing.

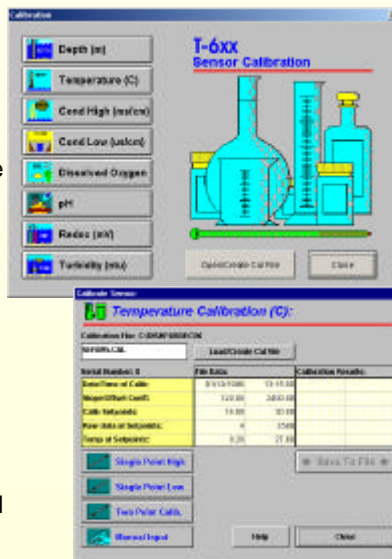
Standalone:

The T-613 can be connected directly to a computer with a terminal program (such as HyperTerminal®). A set of simple commands can calibrate and configure the probe then receive the measured parameters.

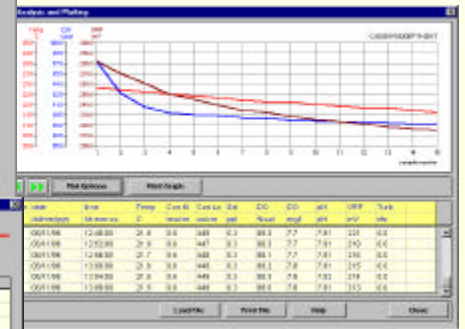
TuroSoft management:

TuroSoft makes the T-613 even easier to use.

The simple and easy to use software supports configuration, real time graphs, easy calibration procedures, flexible data logging with "spot" readings taken at the click of a key while basic logging is happening and more.



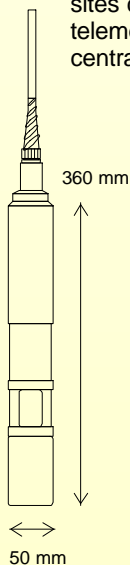
Step by step guided calibration procedures



Analyse stored data files

Multiprobe with TuroSoft management:

With telemetry options, battery box or solar panel options a comprehensive multiprobe/multisite monitoring system can be set up. Up to 4 remote sites can be monitored using simple radio telemetry, all accessed through TuroSoft at the central control.



Sensor	Range	Accuracy	Resolution	Type
Temperature	-2 to 50°C	±0.05°C	0.01°C	pt100 element in a stainless steel sleeve.
Conductivity	0 to 80 ms/cm 0 to 8000 us/cm	±0.05 ms/cm ±5 us/cm	0.02 ms/cm 3 us/cm	Four platinum electrode cell. Low range uses KCl algorithms, high range uses standard seawater ¹ algorithms
Salinity ¹	0 to 60 ppt	±0.05 ppt	0.02 ppt	Calculated from conductivity and temperature.
Dissolved Oxygen	0 to 200% saturation 0 to 20 mg/l	±0.5%	0.1%	Active Pb/Ag cell with a stabilised PTFE membrane, inbuilt stirrer to allow constant flow over membrane for stable reading.
Turbidity	0 to 600 ntu	±0.5 up to 300 ±5% from 300	0.2 ntu 0.3 ntu	Nephelometric measurement from a detector aligned 90° to the pulsed infra-red source that is unaffected by daylight.
pH	0 to 14	±0.03	0.01	Combination Ag/AgCl with junction (common with ORP).
ORP ² (REDOX)	-700 mV to +1100 mV	±3 mV	1 mV	Combination bare metal electrode with common reference junction with pH sensor.
Depth (optional)	0 to 100 m or 0 to 150 m	±0.5% of full scale	0.1 m	Dual active arm silicon strain gauge.

1 - Calculated from conductivity and temperature using the Practical Salinity Scale; 2 - REDOX output is referenced to hydrogen ion electrode as per IEC746-5.



TURO TECHNOLOGY PTY LTD
P.O. BOX 103, SANDY BAY, TASMANIA, 7006, AUSTRALIA
tel: +61 3 6236 9511; fax: +61 3 6236 9506; www.turo.com.au